



360 west aspen avenue
salt lake city, utah 84101
801 532 4422

UNLESS A PROFESSIONAL SEAL WITH SIGNATURE AND DATE IS AFFIXED, THIS DOCUMENT IS PRELIMINARY AND IS NOT INTENDED FOR CONSTRUCTION, RECORDING PURPOSES, OR IMPLEMENTATION.

THE DESIGNS SHOWN AND DESCRIBED HEREIN INCLUDING ALL TECHNICAL DRAWINGS, GRAPHIC REPRESENTATIONS & MODELS THEREOF, ARE PROPRIETARY & CAN NOT BE COPIED, DUPLICATED, OR COMMERCIALY EXPLOITED IN WHOLE OR IN PART WITHOUT THE SOLE AND EXPRESS WRITTEN PERMISSION FROM METHOD STUDIO INC.

project:

**THE FLATS
AT TETON
PEAKS,
BUILDING A
(8-PLEX)**

DRIGGS, IDAHO
PARCEL # RPA00000261206

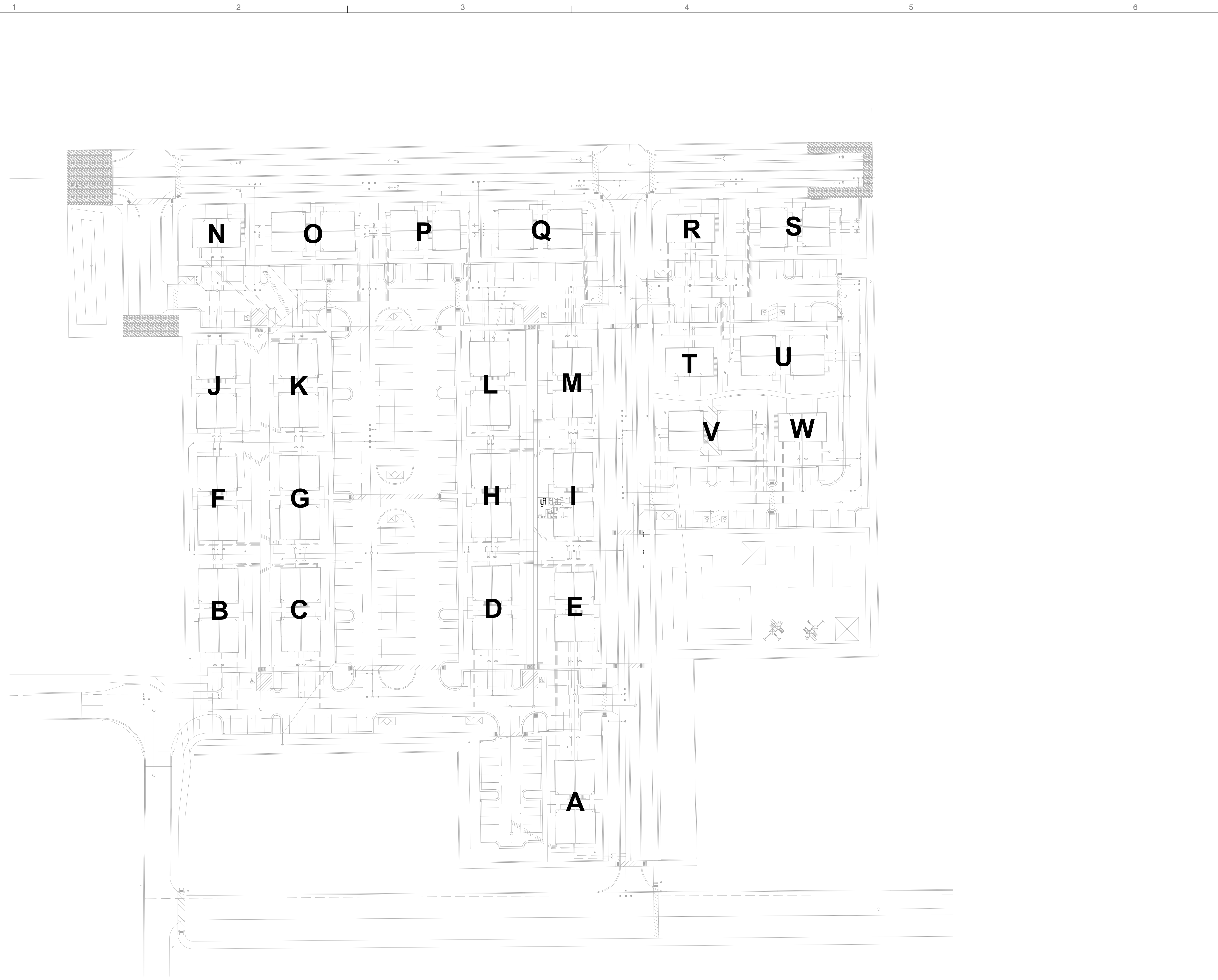
project #: 21.0555
date: 10/17/2023

revisions :

title:
**OVERALL
KEY PLAN**

sheet:

A001
PERMIT SET



A1 OVERALL SITE KEY PLAN
1" = 40'-0"




n o r t h

1 2 3 4 5 6

GENERAL NOTES - SITE

- 1 NO CROSS SLOPES GREATER THAN 2%
- 2 ALL LANDINGS AT BUILDING EXITS NOT TO EXCEED 2% SLOPE IN ANY DIRECTION
- 3 ALL SIDEWALK CURB CUTS TO HAVE ADA ACCESSIBLE RAMP AND DETECTABLE WARNING
- 4 DOORS SERVING SPACES WITH AN OCCUPANT LOAD OF 50 OR MORE SHALL SWING IN THE DIRECTION OF TRAVEL AND SHALL BE PROVIDED WITH PANIC HARDWARE. SEE SHEET SERIES A50
- 5 SEE A500 SHEET SERIES FOR TYPICAL SITE DETAILS
- 6 GENERAL CONTRACTOR TO COORDINATE WITH LANDSCAPE, AND CIVIL, DRAWINGS, AND SPECIFICATIONS
- 7 SEE CIVIL FOR FULL ACCESSIBLE ROUTES AND SLOPES
- 8 SEE LANDSCAPE PLANS FOR IRRIGATION AND PLANTING DRAWINGS

SYMBOL LEGEND

- BOUNDARY LINE 
- PUBLIC UTILITY EASEMENT 
- SETBACK LINE 



360 west aspen avenue
salt lake city, utah 84101
801 532 4422



UNLESS A PROFESSIONAL SEAL WITH SIGNATURE AND DATE IS AFFIXED, THIS DOCUMENT IS PRELIMINARY AND IS NOT INTENDED FOR CONSTRUCTION, RECORDING PURPOSES, OR IMPLEMENTATION.

THE DESIGNS SHOWN AND DESCRIBED HEREIN INCLUDING ALL TECHNICAL DRAWINGS, GRAPHIC REPRESENTATIONS & MODELS THEREOF, ARE PROPRIETARY & CAN NOT BE COPIED, DUPLICATED, OR COMMERCIALLY EXPLOITED IN WHOLE OR IN PART WITHOUT THE SOLE AND EXPRESS WRITTEN PERMISSION FROM METHOD STUDIO INC.

project:

**THE FLATS
AT TETON
PEAKS,
BUILDING A
(8-PLEX)**

DRIGGS, IDAHO
PARCEL # RPA00000261206

project #: 21.0555
date: 10/17/2023

revisions :

title:

**OVERALL
MASTERPLAN**

sheet:

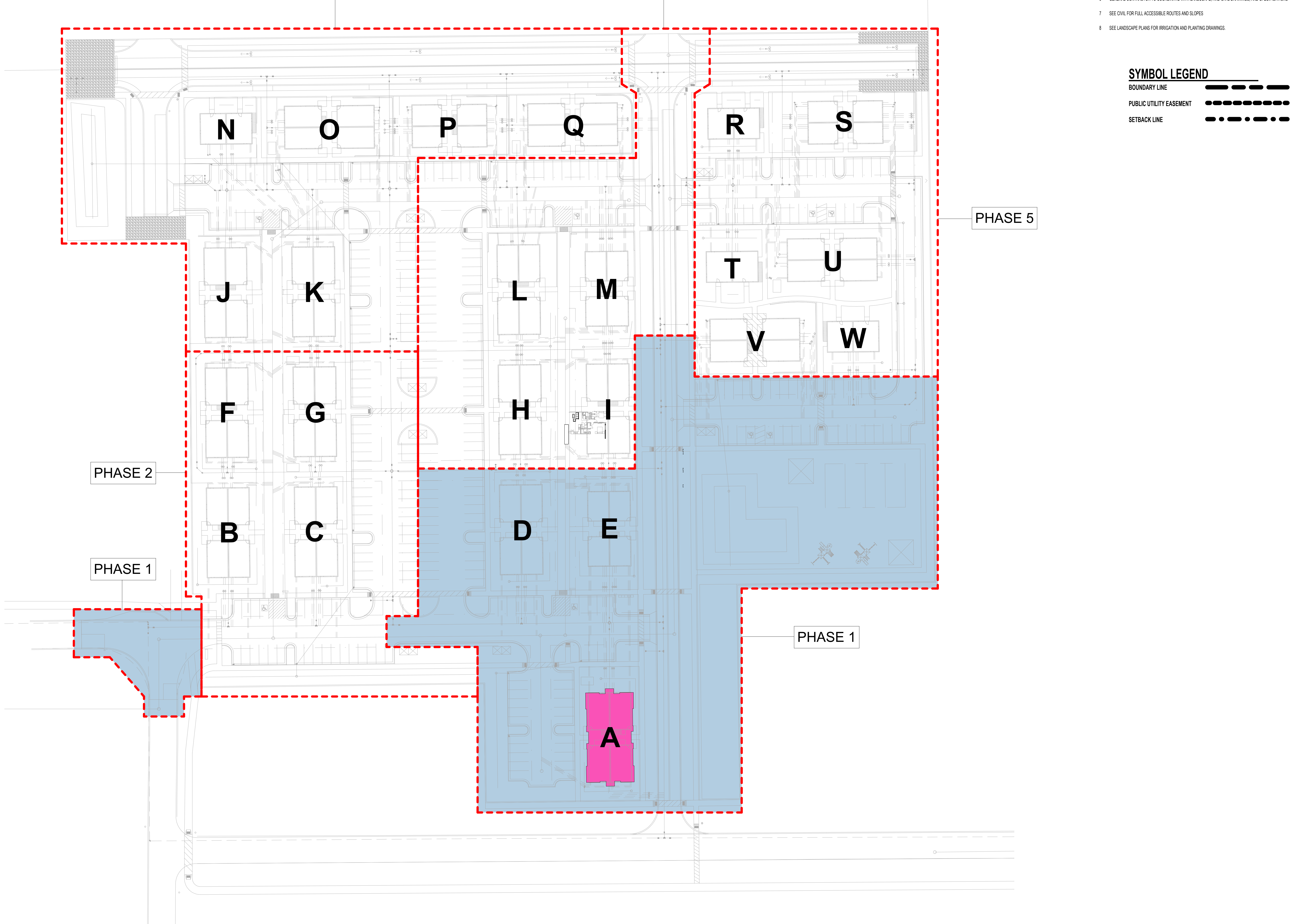
A002

PERMIT SET

A1 OVERALL MASTERPLAN
1" = 40'-0"

n o r t h

1 2 3 4 5 6



PHASE 4

PHASE 3

PHASE 5

PHASE 2

PHASE 1

PHASE 1

N

O

P

Q

R

S

J

K

L

M

T

U

F

G

H

I

V

W

B

C

D

E

A

E
D
C
B
A

E
D
C
B
A

GENERAL NOTES - SITE

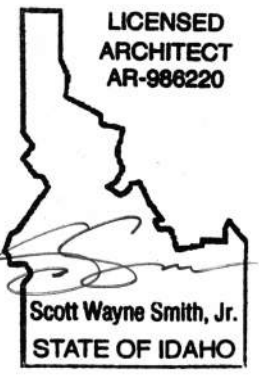
- 1 NO CROSS SLOPES GREATER THAN 2%
- 2 ALL LANDINGS AT BUILDING EXITS NOT TO EXCEED 2% SLOPE IN ANY DIRECTION
- 3 ALL SIDEWALK CURB CUTS TO HAVE ADA ACCESSIBLE RAMP AND DETECTABLE WARNING
- 4 DOORS SERVING SPACES WITH AN OCCUPANT LOAD OF 50 OR MORE SHALL SWING IN THE DIRECTION OF TRAVEL AND SHALL BE PROVIDED WITH PANIC HARDWARE. SEE SHEET SERIES A500
- 5 SEE A500 SHEET SERIES FOR TYPICAL SITE DETAILS
- 6 GENERAL CONTRACTOR TO COORDINATE WITH LANDSCAPE, AND CIVIL DRAWINGS, AND SPECIFICATIONS
- 7 SEE CIVIL FOR FULL ACCESSIBLE ROUTES AND SLOPES
- 8 SEE LANDSCAPE PLANS FOR IRRIGATION AND PLANTING DRAWINGS.

SYMBOL LEGEND

- BOUNDARY LINE
- PUBLIC UTILITY EASEMENT
- SETBACK LINE



360 west aspen avenue
salt lake city, utah 84101
801 532 4422



UNLESS A PROFESSIONAL SEAL WITH SIGNATURE AND DATE IS AFFIXED, THIS DOCUMENT IS PRELIMINARY AND IS NOT INTENDED FOR CONSTRUCTION, RECORDING PURPOSES, OR IMPLEMENTATION.

THE DESIGNS SHOWN AND DESCRIBED HEREIN INCLUDING ALL TECHNICAL DRAWINGS, GRAPHIC REPRESENTATIONS & MODELS THEREOF, ARE PROPRIETARY & CAN NOT BE COPIED, DUPLICATED, OR COMMERCIALY EXPLOITED IN WHOLE OR IN PART WITHOUT THE SOLE AND EXPRESS WRITTEN PERMISSION FROM METHOD STUDIO INC.

project:
THE FLATS AT TETON PEAKS, BUILDING A (8-PLEX)

DRIGGS, IDAHO
PARCEL # RPA00000261206

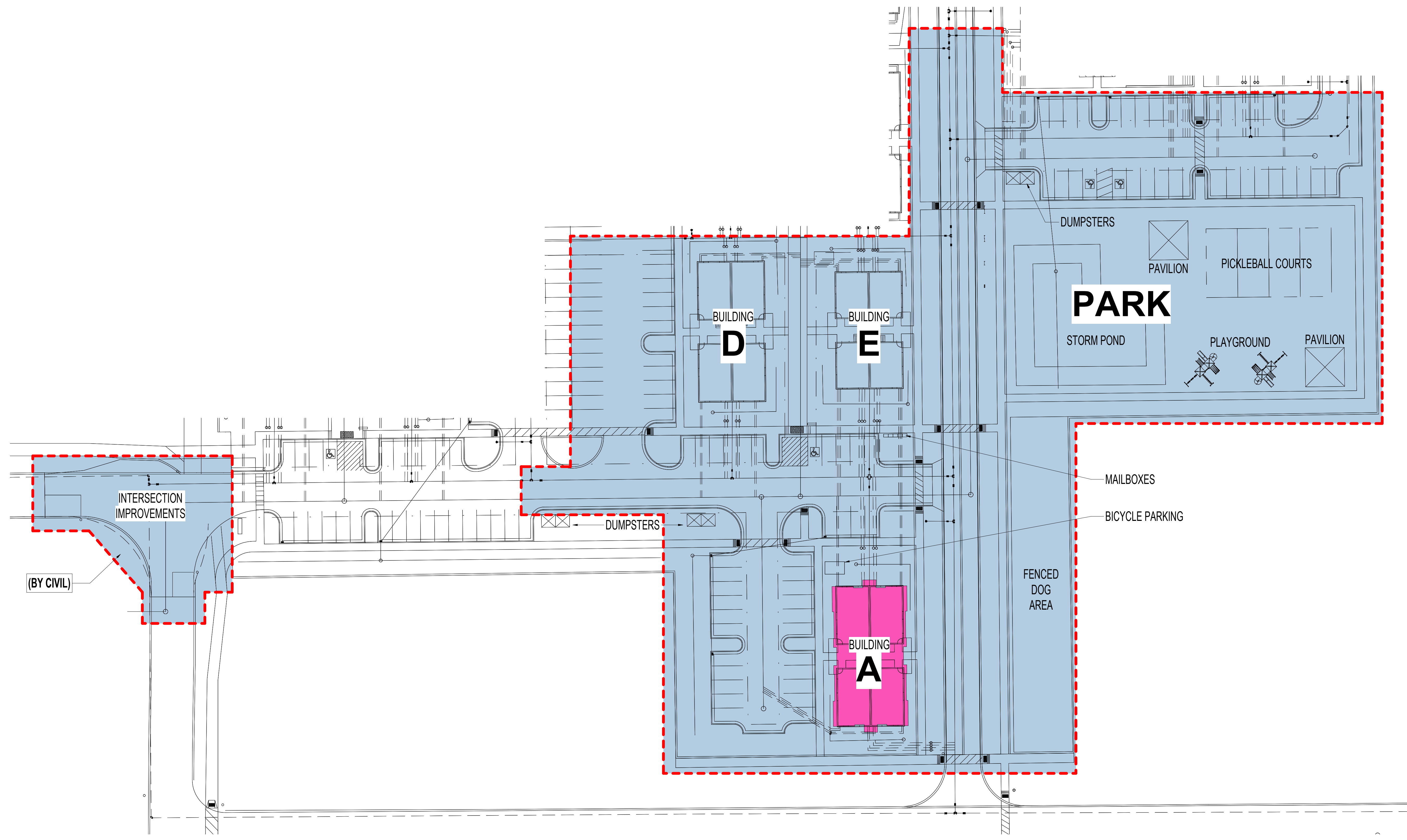
project #: 21.0555
date: 10/17/2023

revisions :

title:
PHASE 1 SITE PLAN

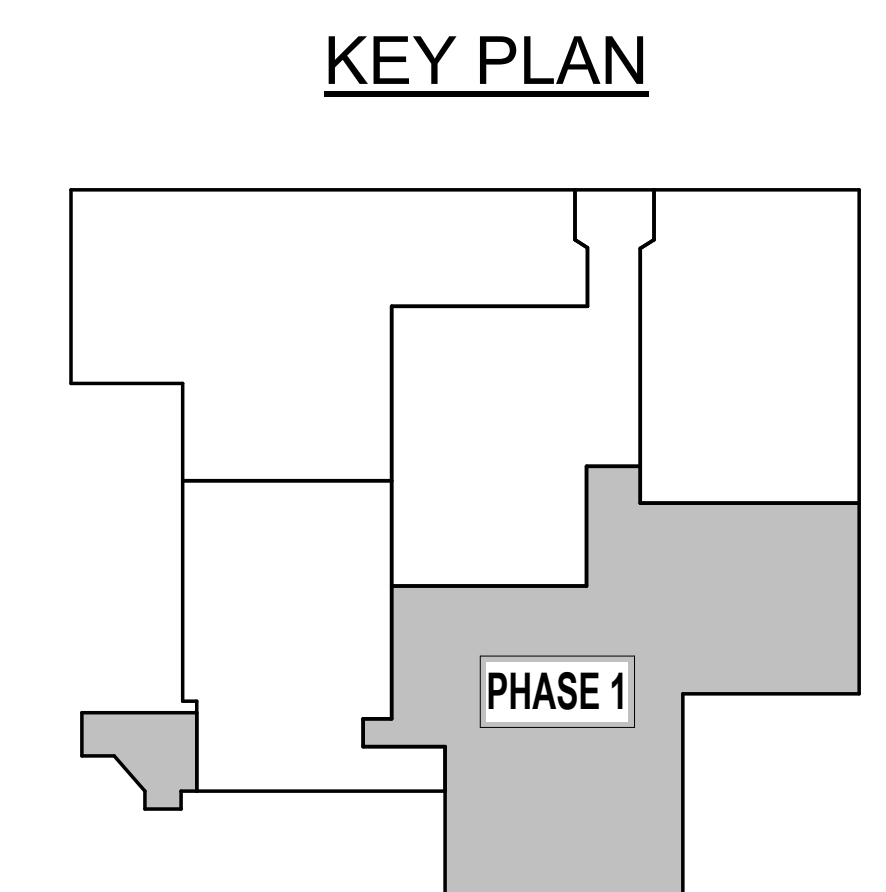
sheet:

A003
PERMIT SET



*** REFER TO APPROVED CIVIL DRAWINGS

A1 PHASE 1 SITE PLAN
1/32" = 1'-0"



n o r t h

1 2 3 4 5 6



360 west aspen avenue
salt lake city, utah 84101
801 532 4422



UNLESS A PROFESSIONAL SEAL WITH SIGNATURE AND DATE IS AFFIXED, THIS DOCUMENT IS PRELIMINARY AND IS NOT INTENDED FOR CONSTRUCTION, RECORDING PURPOSES, OR IMPLEMENTATION.

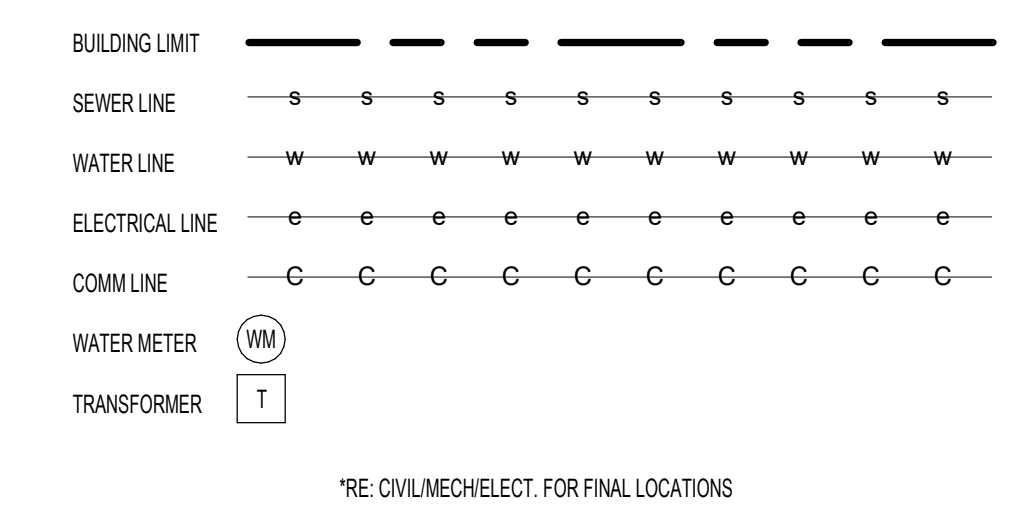
GENERAL NOTES - SITE

- 1 NO CROSS SLOPES GREATER THAN 2%
- 2 ALL LANDINGS AT BUILDING EXITS NOT TO EXCEED 2% SLOPE IN ANY DIRECTION
- 3 ALL SIDEWALK CURB CUTS TO HAVE ADA ACCESSIBLE RAMP AND DETECTABLE WARNING
- 4 DOORS SERVING SPACES WITH AN OCCUPANT LOAD OF 50 OR MORE SHALL SWING IN THE DIRECTION OF TRAVEL AND SHALL BE PROVIDED WITH PANIC HARDWARE. SEE SHEET SERIES A500
- 5 SEE A500 SHEET SERIES FOR TYPICAL SITE DETAILS
- 6 GENERAL CONTRACTOR TO COORDINATE WITH LANDSCAPE, AND CIVIL DRAWINGS, AND SPECIFICATIONS
- 7 SEE CIVIL FOR FULL ACCESSIBLE ROUTES AND SLOPES
- 8 SEE LANDSCAPE PLANS FOR IRRIGATION AND PLANTING DRAWINGS.

KEYED NOTES

3.02	
03.02	CONCRETE SIDEWALK 5% MAX 2% CROSS SLOPE ON ACCESSIBLE ROUTES. RE: CIVIL DRAWINGS
3.03	
32.01	LANDSCAPE AREA. RE: LANDSCAPE
32.08	DETECTABLE WARNING SURFACE. RE: CIVIL DRAWINGS
32.09	EXTERIOR BIKE RACK. SEE CIVIL
32.13	SINGLE STALL SURFACE MOUNTED RESERVED PARKING SIGN. SEE SHEET G011 DETAILS

UTILITIES & SITE KEY



THE DESIGNS SHOWN AND DESCRIBED HEREIN INCLUDING ALL TECHNICAL DRAWINGS, GRAPHIC REPRESENTATIONS & MODELS THEREOF, ARE PROPRIETARY & CAN NOT BE COPIED, DUPLICATED, OR COMMERCIALY EXPLOITED IN WHOLE OR IN PART, WITHOUT THE SOLE AND EXPRESS WRITTEN PERMISSION FROM METHOD STUDIO INC.

project:
THE FLATS AT TETON PEAKS, BUILDING A (8-PLEX)

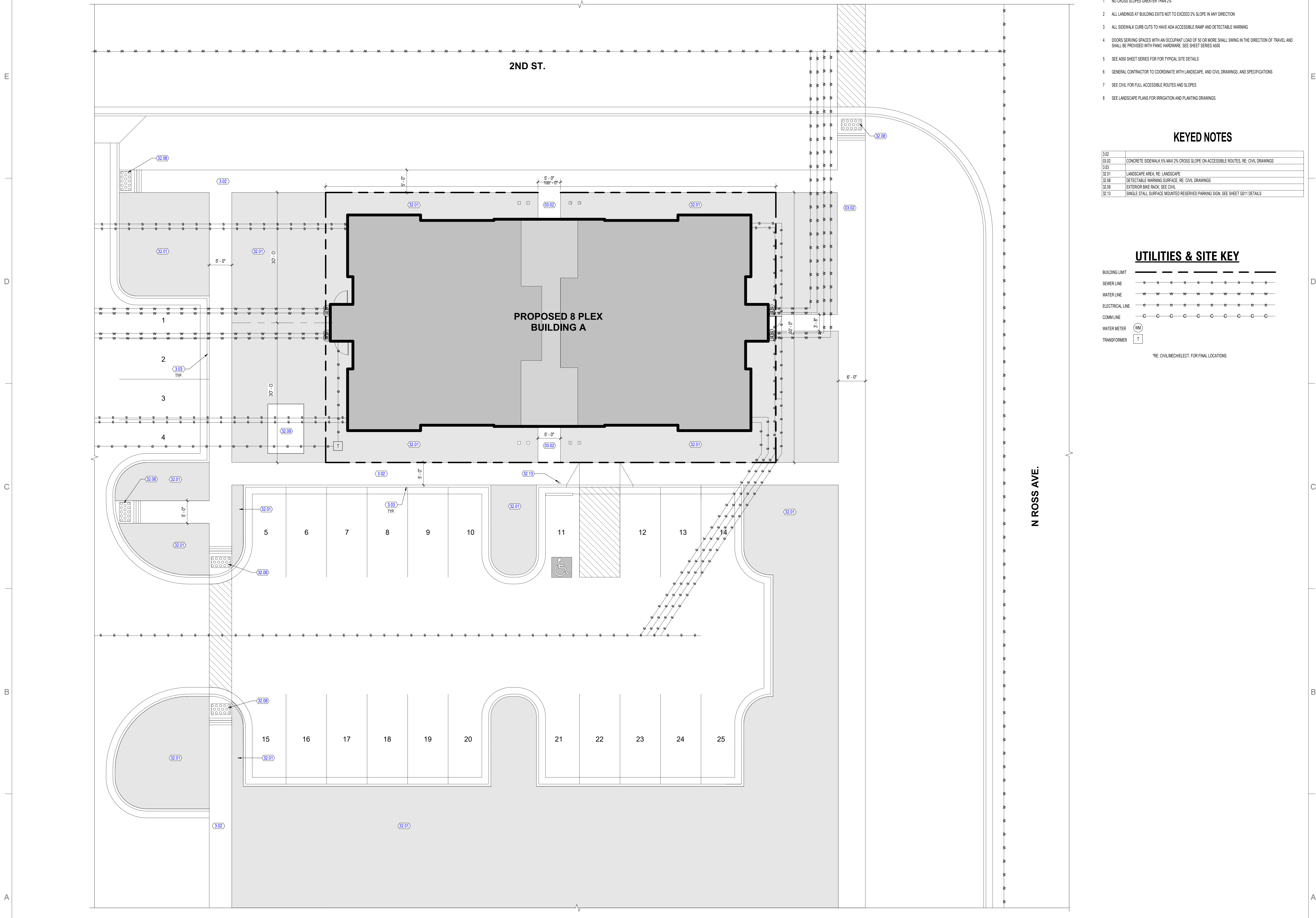
DRIGGS, IDAHO
PARCEL # RPA00000261206

project #: 21.0555
date: 10/17/2023

revisions :

title:
INDIVIDUAL SITE PLAN - BUILDING A

sheet:
A004
PERMIT SET



2ND ST.

PROPOSED 8 PLEX BUILDING A

N ROSS AVE.

A1 BUILDING 'A' SITE PLAN
1/8" = 1'-0"



1 2 3 4 5 6