



TETON RESERVE  
NEW HOMES IN VICTOR, ID

TETON RESERVE

Tayson Rockefeller  
208.417.8801  
tayson@tetonvalleyrealty.com



2,370 finished sq.ft.  
3,965 with opt. basement

## THE TRAVERSE

3-5 bedrooms  
2.5-3.5 bathrooms

## THIS HOME FEATURES

Open Concept Main Level with 9' ceilings  
Mud Room off Garage  
Powder Bath on Main Level  
Flex Room off Entry  
Master Bedroom Walk-in Closet  
Main Floor Laundry Room  
13" Tile in Bathrooms and Laundry

Large Kitchen Island  
Walk-in Pantry  
42" or Staggered Height Upper Cabinets  
Granite Countertops  
Two-Tone Paint  
Stained Cedar Exterior  
Front Yard Landscaping with Sprinklers



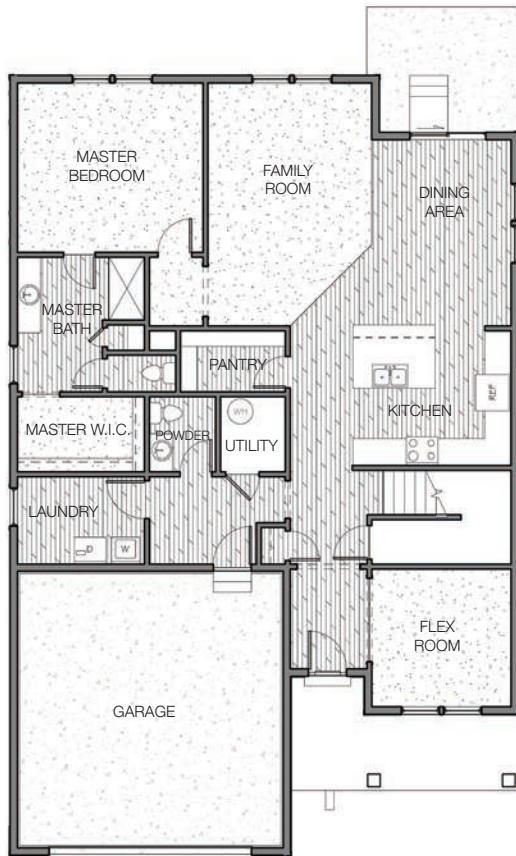
\*Home sq. ft. are approximate and are subject to change. The builder reserves the right to change or withdraw floor plans and features without notice. Artistic renderings represent the general appearance of the design and are not meant to be an exact rendition.



# FLOOR PLAN LAYOUT

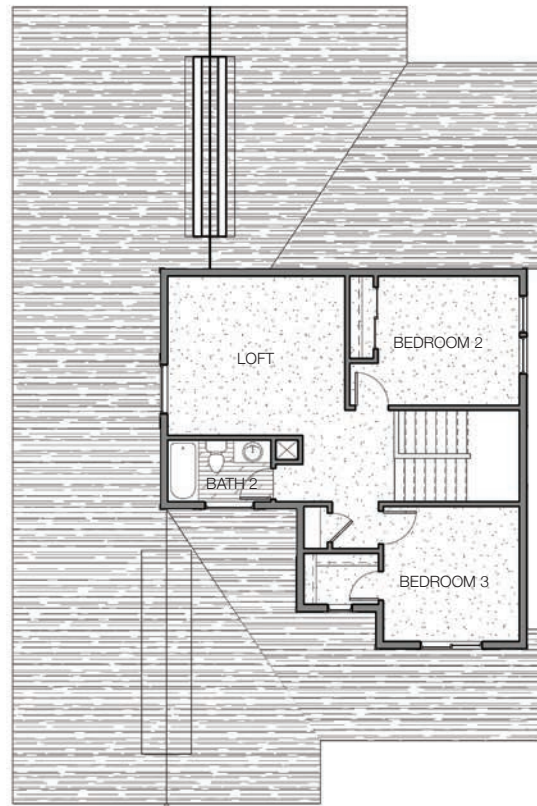
The Traverse

**FieldStone  
HOMES**



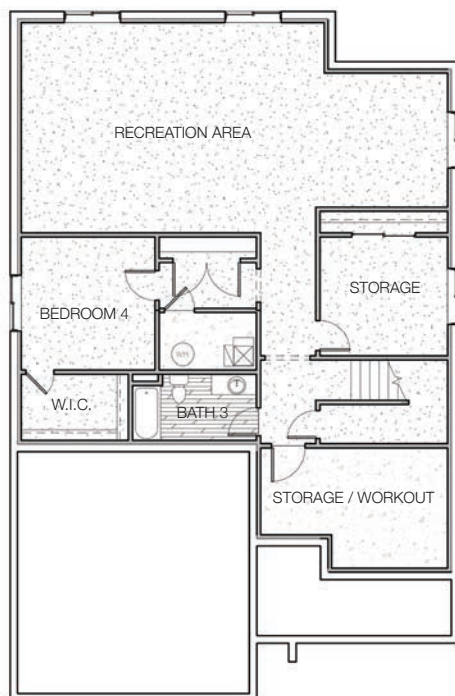
## FIRST FLOOR

Approx. 1,694 Sq Ft



## SECOND FLOOR

Approx. 676 Sq Ft



## OPTIONAL BASEMENT LAYOUT

Approx. 1,595 Sq Ft Unfinished