



TETON RESERVE  
NEW HOMES IN VICTOR, ID

TETON RESERVE

Tayson Rockefeller  
208.417.8801  
tayson@tetonvalleyrealty.com



1,830 finished sq.ft.  
3,560 wit opt. basement

## THE ALBRIGHT

3-5 bedrooms  
2-3 bathrooms

## THIS HOME FEATURES

Open Concept Main Level with 9' ceilings  
Mud Room off Garage  
Powder Bath on Main Level  
Large Closets in Each Bedroom  
Main Level Laundry Room  
Tile in Bathrooms and Laundry

Large Kitchen Island  
Walk-in Pantry  
42" or Staggered Height Upper Cabinets  
Granite Countertops in Kitchen  
Two-Tone Paint  
Cedar Exterior  
Front Yard Landscaping with Sprinklers



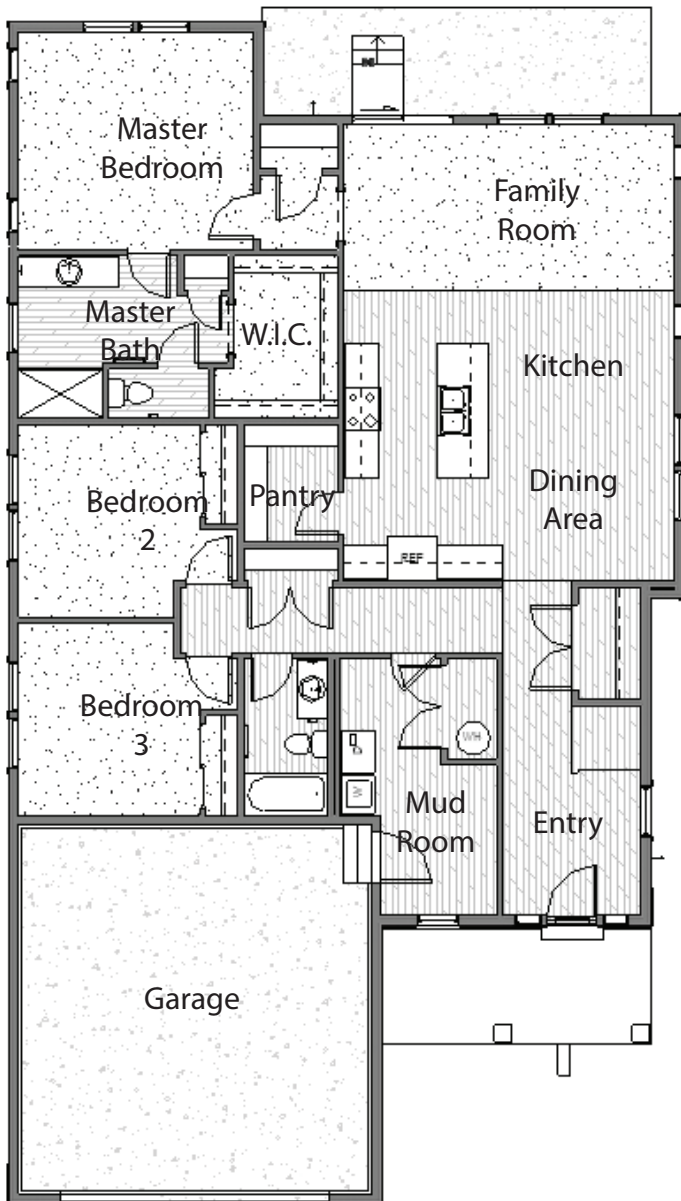
\*Home sq. ft. are approximate and are subject to change. The builder reserves the right to change or withdraw floor plans and features without notice. Artistic renderings represent the general appearance of the design and are not meant to be an exact rendition.



# FLOOR PLAN LAYOUT

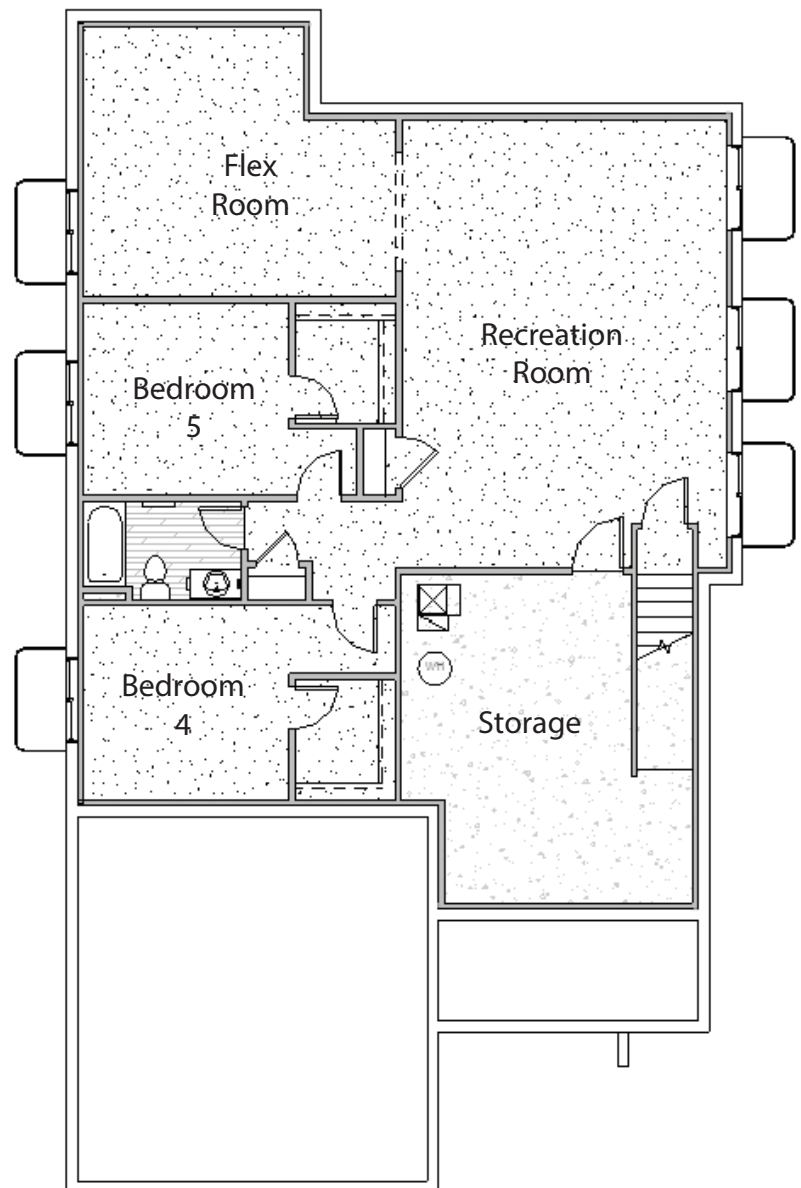
The Albright

**FieldStone  
HOMES**



## FIRST FLOOR

Approx. 1,830 Sq Ft



## OPTIONAL FINISHED BASEMENT

Approx. 1,730 Sq Ft Unfinished