



# TETON RESERVE

Standard Features

**FieldStone**  
**HOMES**

## INCLUDED STAINLESS STEEL APPLIANCES



\*Fieldstone Homes reserves the right to remove or replace standard options at any time without notice.

## **INCLUDED MASTER BATH ENCLOSURES-per plan**

**Walk-In Shower White 3X6 Subway Tile. Set Straight Horizontally ; Satin Nickel or Bronze Framed Door**



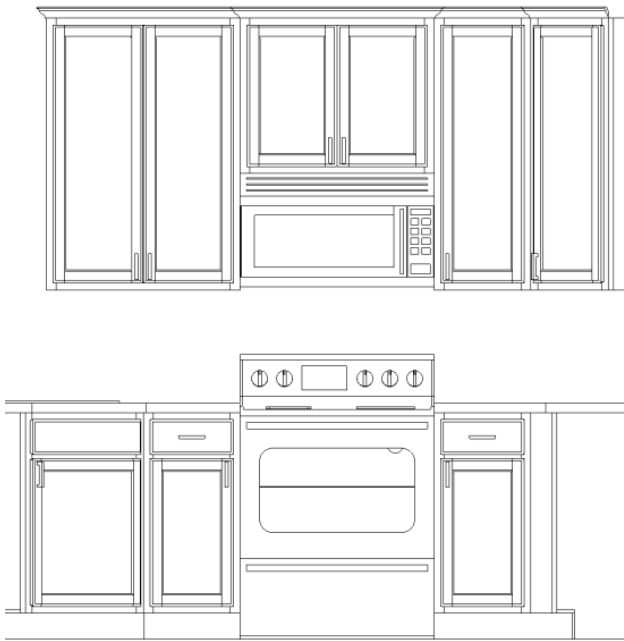
## **INCLUDED SECONDARY BATH ENCLOSURES**

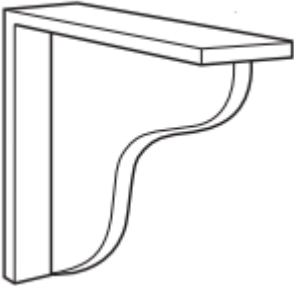

**Tub/Shower Combo with White 3X6 Subway Tile. Set Straight Horizontally. Satin Nickel or Bronze Shower Rod**



INCLUDED CABINET STYLE: 42” UPPERS

Islands included; per plan



Island Support Corbel	Base Cabinet Set-Up: Drawer and cabinet box w/half shelf
	

\*Fieldstone Homes reserves the right to remove or replace standard options at any time without notice.

## INCLUDED CABINETS & ACCESSORIES

Oak with dovetail drawer construction and soft close hardware on the drawers and doors

1 vertical tray dividers



### Level 1 Hardware Included

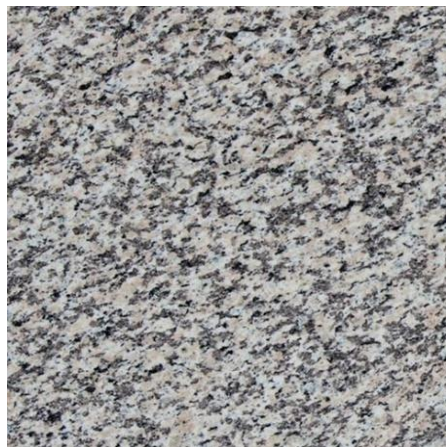
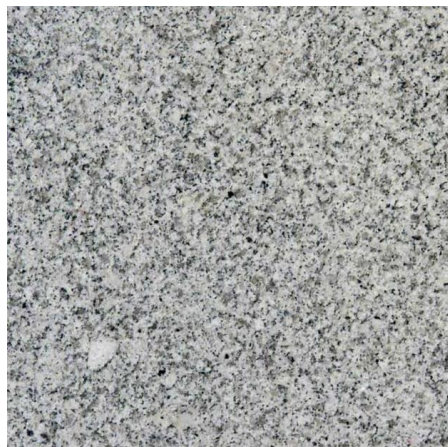


## Built in garbage-per plan



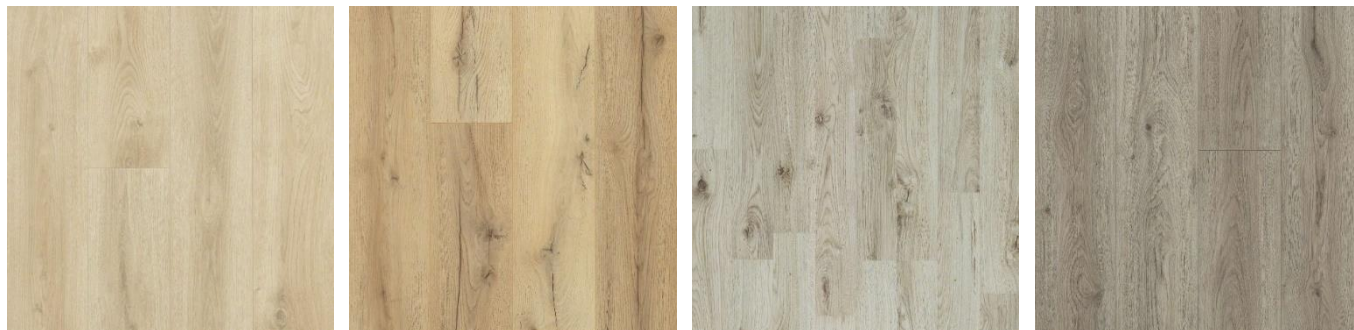
## INCLUDED COUNTERTOPS

**2cm Granite: Included in kitchen and bathrooms with a flat polished edge**



## INCLUDED FLOORING

**Laminate included in entry, kitchen, nook, mudroom, pantry**



**Tile included in wet areas (bathrooms & laundry): 13" x 13" straight set**



INCLUDED FLOORING

Carpet w/6 LB pad included



\*Fieldstone Homes reserves the right to remove or replace standard options at any time without notice.



INCLUDED EXTERIOR DOORS

Front Door-Craftsman 3 Lite-6'8" With block shelf (not shown)	Garage service and entry door (door between garage and mudroom)
	
Painted <i>*Stained options available</i>	6 Panel Raised <i>*Only door available at this location</i>

INCLUDED INTERIOR DOORS



2 Panel Square Top

\*Fieldstone Homes reserves the right to remove or replace standard options at any time without notice.

## **INCLUDED FINISH TRIM-CRAFTSMAN STYLE**

**5" Baseboards / 3 ¼" Door Casing / 5 ½" Door Header**



**Included window style is drywall wrapped: Wood painted window sills are available as an option**



## INCLUDED HARDWARE



**Front Door Handle Set Brushed Nickel or Bronze**



**Door Hardware- Levers-Brushed Nickel or Bronze**

**Rear door or other service doors will be keyed with a deadbolt.**

**Master bedroom & bathroom doors will have a privacy lock.**

## INCLUDED LIGHTING

**Brushed Nickel or Bronze Included**

**3 Bulb flush mount ceiling lights**



**3 Bulb bathroom vanity lights. (1) fixture over each sink**

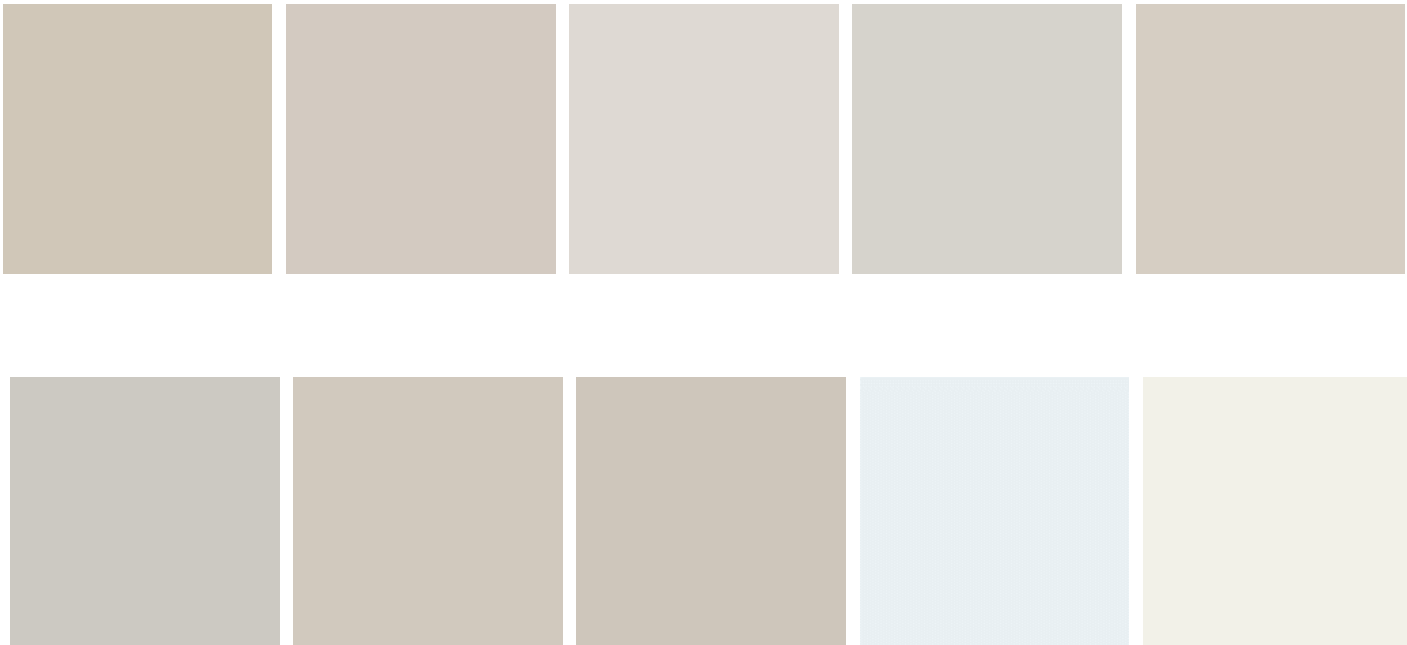


**Decora Light Switches**

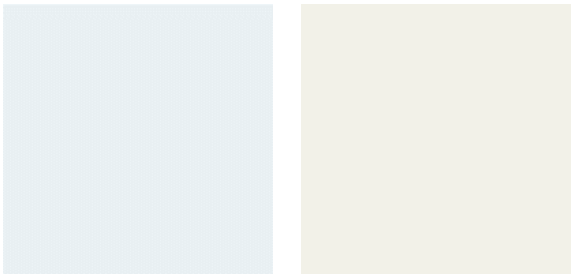


PAINT

Two-tone paint included. Walls and ceiling are painted one color with an eggshell finish:



Doors & Trim are painted with a semi-gloss finish:



\*Fieldstone Homes reserves the right to remove or replace standard options at any time without notice.

## PLUMBING

**Kitchen Faucet: Moen / Arbor / Brushed Nickel / Bronze / Black**



## KITCHEN SINKS

**Undermount stainless steel sinks: included with all granite/quartz countertops:**



5050 / 6040

## INCLUDED PLUMBING

**Bathroom Faucets: Moen / Eva / Brushed Nickel / Bronze**



**Undermount round white bathroom sinks**



**Hardware: towel rings, towel bars, & toilet paper holders:**

**Eva / Brushed Nickel / Bronze**



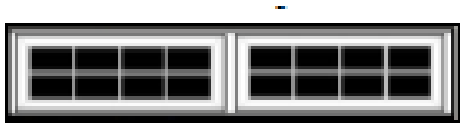
INCLUDED EXTERIOR LIGHTS

On either side of garage door(s) & by front door	Rear doors and garage service door
	
Mill Lane-Anvil Iron 16” H	Mill Lane-Anvil Iron 10” H

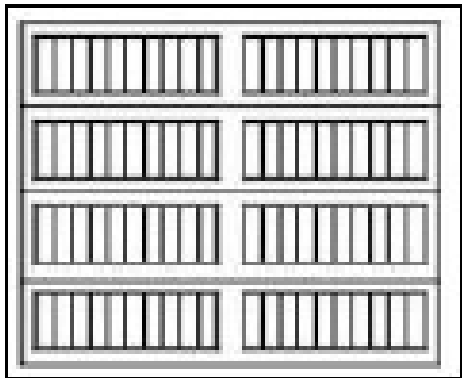
\*Fieldstone Homes reserves the right to remove or replace standard options at any time without notice.



INCLUDED GARAGE DOOR STYLE AND WINDOWS



Stockton Long



CSX Series - Long Grooved

Garage Door Colors



\*Fieldstone Homes reserves the right to remove or replace standard options at any time without notice.